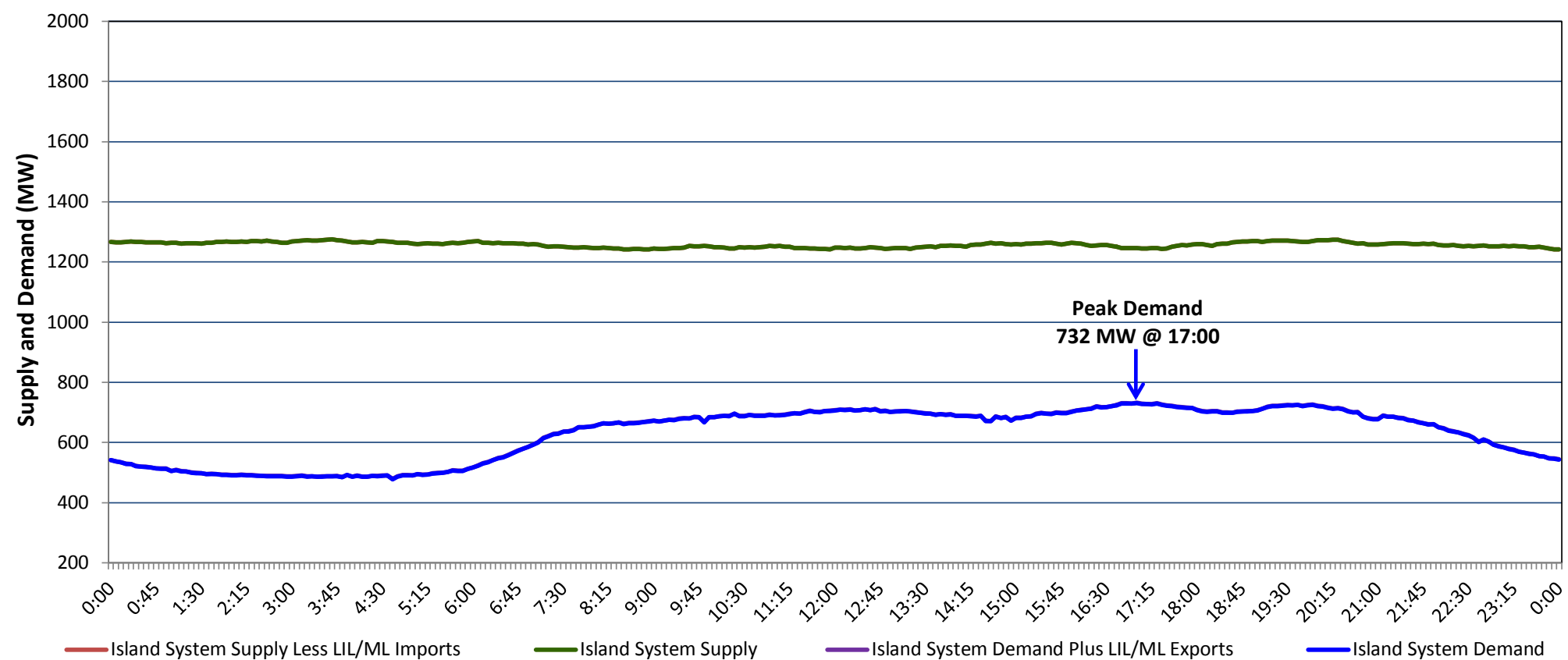


**Newfoundland Labrador Hydro (NLH)
Supply and Demand Status Report Filed Wednesday, September 30, 2020**

**Section 1
Island Interconnected System Supply, Demand & Exports
Actual 24 Hour System Performance For Tuesday, September 29, 2020**



Supply Notes For September 29, 2020

- 1,2
- A As of 0853 hours, June 21, 2020, Holyrood Unit 3 available but not operating (150 MW).
 - B As of 0808 hours, July 15, 2020, Holyrood Unit 2 unavailable due to planned outage (170 MW).
 - C As of 1811 hours, September 02, 2020, Holyrood Unit 1 available but not operating (170 MW).
 - D As of 1748 hours, September 13, 2020, Bay d'Espoir Unit 7 unavailable due to planned outage (154.4 MW).
 - E As of 0705 hours, September 22, 2020, Hardwoods Gas Turbine unavailable due to planned outage (50 MW).
 - F As of 0734 hours, September 27, 2020, Hinds Lake Unit unavailable due to planned outage (75 MW).

**Section 2
Island Interconnected Supply and Demand**

Wed, Sep 30, 2020	Island System Outlook ³	Seven-Day Forecast	Temperature (°C)		Island System Daily Peak Demand (MW)	
			Morning	Evening	Forecast	Adjusted ⁷
Available Island System Supply: ⁵	1,270 MW	Wednesday, September 30, 2020	19	21	735	735
NLH Island Generation: ⁴	925 MW	Thursday, October 01, 2020	21	17	725	725
NLH Island Power Purchases: ⁶	115 MW	Friday, October 02, 2020	16	18	740	740
Other Island Generation:	230 MW	Saturday, October 03, 2020	18	17	725	725
ML/LIL Imports:	- MW	Sunday, October 04, 2020	11	7	870	870
Current St. John's Temperature & Windchill:	19 °C	Monday, October 05, 2020	7	7	865	865
7-Day Island Peak Demand Forecast:	895 MW	Tuesday, October 06, 2020	8	5	895	895

Supply Notes For September 30, 2020

- 3
- Notes:
1. Generation outages for running and corrective maintenance are included. These are not unusual for power system operations. They generally do not impact customer supply. The power system operators schedule outages to system equipment whenever possible to coincide with periods when customer demands are low and sufficient supply reserves are available. However, from time to time equipment outages are necessary and reserves may be impacted.
 2. Due to the Island system having no synchronous connections to the larger North American grid, when there is a sudden loss of large generating units there may be a requirement for some customer's load to be interrupted for short periods to bring generation output equal to customer demand. This automatic action of power system protection, referred to as under frequency load shedding (UFLS), is necessary to ensure the integrity and reliability of system equipment. Under frequency events have typically occurred 5 to 8 times per year on the Island Interconnected System and the resultant customer load interruptions are generally less than 30 minutes. With the activation of the Maritime Link frequency controller during the winter of 2018, UFLS events have occurred less frequently.
 3. As of 0800 Hours.
 4. Gross output including station service at Holyrood (24.5 MW) and improved NLH hydraulic output due to water levels (35 MW).
 5. Gross output from all Island sources (including Note 4).
 6. NLH Island Power Purchases include: CBPP Co-Gen, Nalcor Exploits, Rattle Brook, Star Lake, Wind Generation and capacity assistance (when applicable).
 7. Adjusted for curtailable load, market activities and the impact of voltage reduction when applicable.

**Section 3
Island Peak Demand Information
Previous Day Actual Peak and Current Day Forecast Peak**

Tue, Sep 29, 2020	Actual Island Peak Demand ⁸	17:00	732 MW
Wed, Sep 30, 2020	Forecast Island Peak Demand		735 MW

- Notes: 8. Island Demand / LIL / ML Exports (where applicable) is supplied by NLH generation and purchases, plus generation owned and operated by Newfoundland Power and Corner Brook Pulp & Paper (Deer Lake Power, DLP).